



TREELINE

195 MONTAGUE STREET

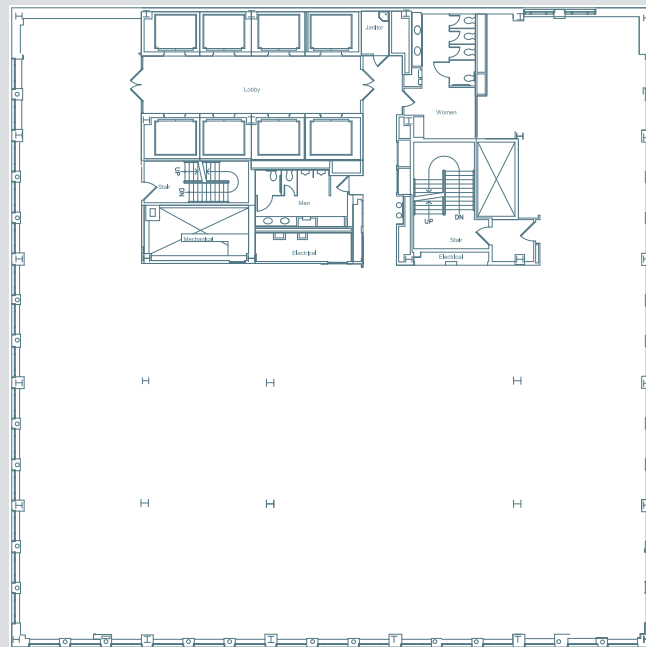
195 MONTAGUE
BROOKLYN, NEW YORK

RARE LEASING OPPORTUNITY IN THE HEART OF DOWNTOWN BROOKLYN WITH 108,000 SQ FT. OF DIVISIBLE SPACE

195 Montague is ideally located in the flourishing commercial strip designated as the Brooklyn Tech Triangle. Conveniently located near the Brooklyn Bridge, Barclays Center and major prime retail and residential, this 14 story office condominium offers a total of 108,000 RSF available space for lease. This Downtown Brooklyn "destination" office hotspot caters to all types of businesses.

- Leasing opportunity consists of the top four contiguous floors along with the 5th floor and the retail ground floor
- Accessible by public transportation including all major subway lines including the 2, 3, 4, 5, N, R, A, C & F as well as the B38, B41, B52, B103 bus lines
- Only two subway stops into Lower Manhattan
- Walking distance to all Federal, State and local Courts as well as Brooklyn's historic Brooklyn Borough Hall
- Walking distance to all restaurants and shopping
- 24/7 building access, 365 days of the year
- Outstanding views
- Efficient and attractive floor plates at 19,145 rsf each

FLOOR PLAN





Treeline was founded on turning the status quo upside down. The company is renowned for seeing the invisible and finding opportunities where others take a pass. It's the reason Treeline leads the industry in results-driven creativity and insight.

TREELINE

Kraig Silver

Executive Vice President - Leasing
kraig.silver@treelinecompanies.com

516.837.8000

www.treelinecompanies.com